

# MODEL 70

## Framed Continuous Hinge Door



IN  
FO



## Features

- Full Length Continuous Hinge
- Fully Framed Door for Maximum Rigidity
- Adjustable Jambs for Exact Fit
- Low Profile Curb for Additional Waterproofing
- Adjustable Drip Rail Seals Bottom of Door and Channels Water Back Into Shower
- Full Length Magnetic Closures
- Extruded Aluminum Handles Complement the Lines of the Door

# MODEL 70

## Framed Continuous Hinge Door



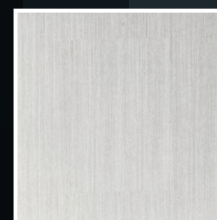
Model 70 Continuous Hinge Door / Oil-Rubbed Bronze Finish

1. Full Length Continuous Hinge
2. Fully Framed Door for Maximum Rigidity
3. Full Length Magnetic Closures
4. Adjustable Drip Rail Seals Bottom of Door and Channels Water Back Into Shower
5. Adjustable Jambs for Exact Fit Even in Out-of-Plumb Openings
6. Extruded Aluminum Handles Compliment the Lines of the Door
7. Low Profile Curb for Additional Waterproofing

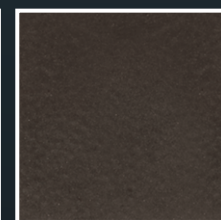


Interior View

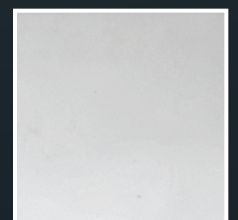
## FINISH OPTIONS



Brushed Nickel



Oil-Rubbed Bronze



Polished Silver

**Enduro  
Shield**

Reduce cleaning time  
by up to 90%